

Ordering Information **Film Capacitors**

When possible, specify the complete CDE part number on your order(s). CDE's part numbering system is described below. For options please indicate when making a quote request.

In general, available options include: cut leads, formed leads, non-listed capacitance values, tape, reeling and ammo pack where individual capacitor sizes permit.

Part Numbering System (excludes MEXY, 158X MPX, 150, DSF, Q/QRL and CS)

WMF	1	D	22	K	-F
Series	Voltage Code	Capacitance Decimal Point	Capacitance Significant Figures (μ F)	Tolerance Code	-F RoHS Compliant
WMF	05 = 50 Vdc 06 = 60 Vdc 08 = 80- Vdc 1 = 100 Vdc 2 = 200/250 Vdc 3 = 300Vdc 4 = 400 Vdc 6 = 600 Vdc 8 = 800 Vdc 10 = 1000 Vdc 12 = 1200 Vdc	16 = 1600 Vdc 20 = 2000 Vdc 30 = 3000 Vdc Z = 150 Vdc A = 125 Vac B = 240 Vac Q = 250 Vac C = 360 Vac D = 480 Vac E = 160 Vdc F = 660 Vac G = 600 Vac	T = 0.000 D = 0.00 S = 0.0 P = 0. W = No decimal point	W = \pm 2.5% I = \pm 3% J = \pm 5% H = \pm 6% K = \pm 10 M = \pm 20%	

Part Numbering System (Series 930, 935 ,940 ,941 ,942, 943 and 950)

930	C	1	P	22	K	-F
Series	Termination Code	Voltage Code	Capacitance Decimal Point	Capacitance Significant Figures (μ F)	Tolerance Code	-F RoHS Compliant
930	C = Bare Copper Wire	05 = 50 Vdc	16 = 1600 Vdc	T = 0.000	J = \pm 5%	
935	F = Insulated Stranded	06 = 60 Vdc	20 = 2000 Vdc	D = 0.00	H = \pm 6%	
940	Wire	08 = 80- Vdc	30 = 3000 Vdc	S = 0.0	K = \pm 10	
941	H = Tinned Lugs	1 = 100 Vdc	Z = 150 Vdc	P = 0.	M = \pm 20%	
942		2 = 200/250 Vdc	A = 125 Vac	W = No decimal point		
943		4 = 400 Vdc	B = 240 Vac			
950		6 = 600 Vdc	Q = 250 Vac			
		8 = 800 Vdc	C = 360 Vac			
		10 = 1000 Vdc	D = 480 Vac			
		12 = 1200 Vdc				

Options Available

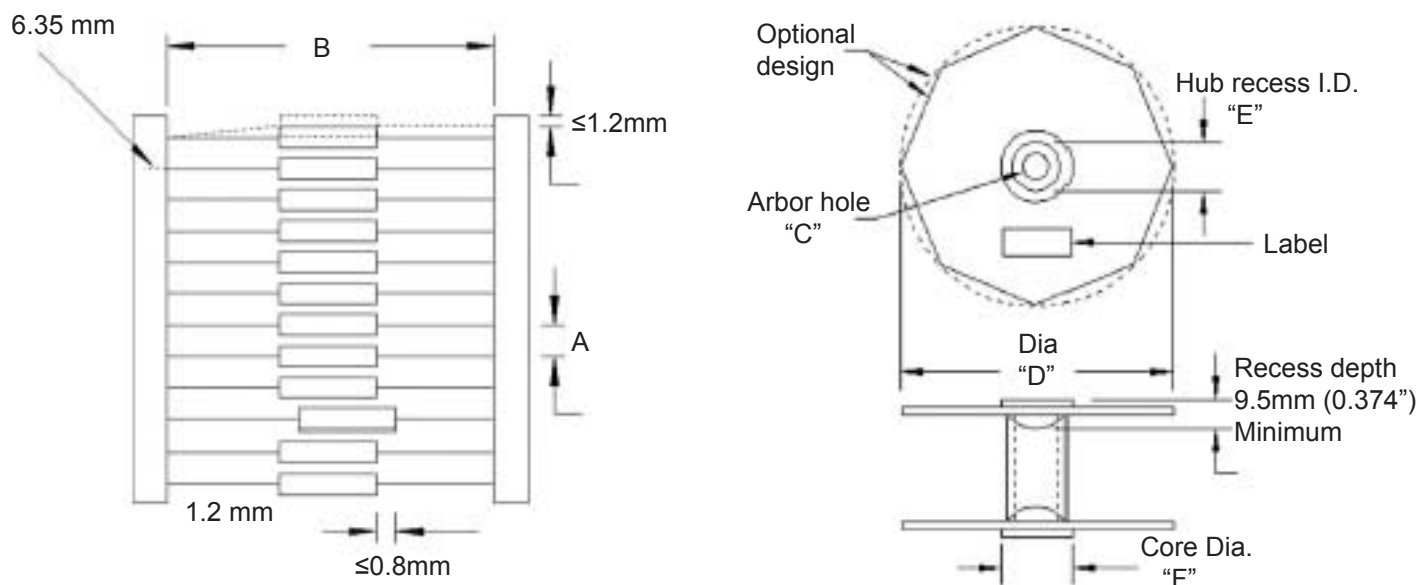
Radial Leads:

- Cut Leads
- Other capacitance values
- Formed lead spacing
- Tape and reeling
- Custom sizes

Axial Leads:

- Cut leads
- Other capacitance values
- Tape and reeling
- Custom sizes

Tape & Reel Axial Lead Capacitors for Automated Insertion, EIA-296-E



Specifications

Capacitor Body Diameter	Capacitor Pitch "A" $\pm 0.5\text{ mm}$ (0.020")
$\leq 5\text{ mm}$ ($\leq 0.195''$)	5 mm or 0.200"
5.01 - 10 mm (0.197 - 0.394")	10 mm or 0.400"
10.01 - 15 mm (0.394 - 0.591")	15 mm or 0.600"

Capacitor Body Length	Inside Tape Spacing "B" $\pm 1.5\text{ mm}$ (0.059")
≤ 16.50 ($\leq 0.65''$)	52.4 mm or 2.062"
16.51 - 28.45 mm (0.651 - 1.12")	63.5 mm or 2.500"
28.46 - 37.00 mm (1.21 - 1.45")	73.0 mm or 2.874"

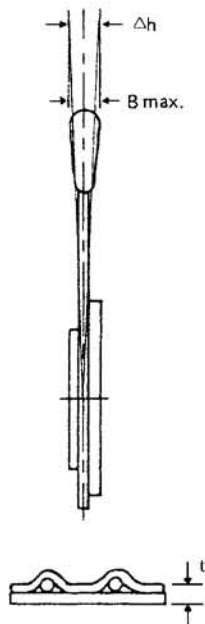
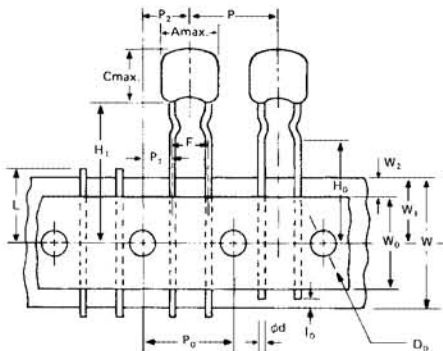
EIA Std.	C	D	E	F
CDE	13.9 - 38.1 mm (0.547 - 1.50")	76.2 - 355.6 mm (3.0 - 14.0")	28.6 - 78.0 mm (1.126 - 3.074")	34.5 - 92.0 mm (1.358 - 3.626")
	16.0 (0.63")	355.0 mm (13.97")	50.0 mm (1.97")	60.0 mm (2.36")

Capacitor Body Diameter	Pitch	Quantity pcs/reel
$\leq 5.0\text{ mm}$	5 mm	4,000 max.
5.1 - 7.0 mm	10 mm	2,000 max.
7.1 - 9.5 mm	10 mm	1,000 max.

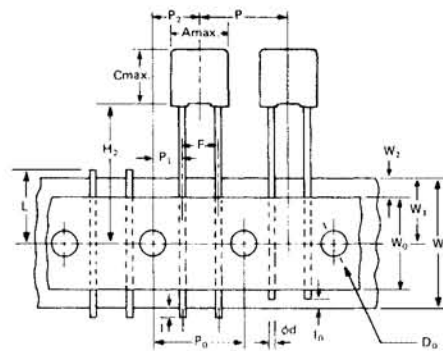
Ordering Information **Film Capacitors**

Tape & Reel Radial Lead Capacitors for Automated Insertion, EIA-468-B

Crimped Lead Taping:

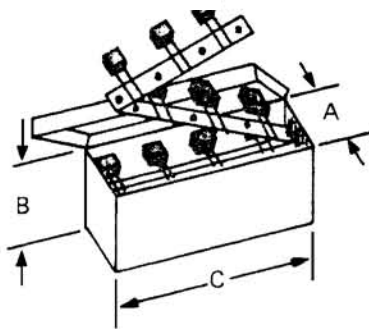


Straight Lead Taping:



ϕd	0.5	± 0.05	(0.0197 ± 0.002)
P	12.7	± 1.0	(0.5 ± 0.0394)
P₀	12.7	± 0.2	(0.5 ± 0.008)
P₂	6.35	± 1.3	(0.25 ± 0.051)
P₁	3.85	± 0.5	(0.152 ± 0.020)
F	5.0	± 0.8	(0.197 ± 0.0315)
Δh	0	± 2.0	(0 ± 0.0787)
W	18.0	± 0.5	(0.709 ± 0.020)
W₁	9.0	± 0.5	(0.354 ± 0.020)
H₁	20.0	± 0.75	(0.787 ± 0.030)
H₂	18.0	± 0.5	(0.709 ± 0.020)
H₀	16.0	± 0.5	(0.630 ± 0.020)
l	2.0	MAX.	(0.079 MAX.)
l₀	7.0	MAX.	(0.276 MAX.)
ϕD_0	4.0	± 0.2	(0.157 ± 0.008)
W₀	12.5	MIN.	(0.492 MIN.)
t	0.7	± 0.2	(0.028 ± 0.008)
W₂	3.0	MAX.	(0.118 MAX.)
L	11.0	MAX.	(0.433 MAX.)

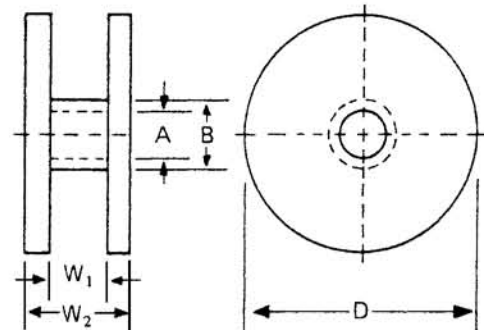
Ammo Box Packing:



dimensions

- A 56 MAX. (2.20 MAX.)
- B 372 MAX. (14.65 MAX.)
- C 372 MAX. (14.65 MAX.)

Reel Packing:



- A — 15mm
- B — 80mm
- D — 370mm

- W₁ — 45mm
- W₂ — 55mm